



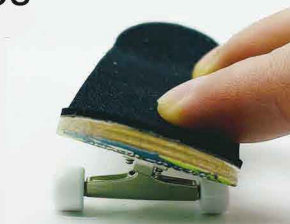
Website: [boardsfirm.com](http://boardsfirm.com)

Email: [info@boardsfirm.com](mailto:info@boardsfirm.com)

Address: Room B615-2, No. 31 Xinghu Road, Huli District, Xiamen, China

Hours: Mon-Fri 9:00AM – 6:00PM

# A Series



A1



A2



A3



A4



A5



A6



A7



A8



A9



A10



A11



A12



A13



A14



A15



A16



A17



A18



A19



A20



## B Series



B1



B2



B3



B4



B5



B6



B7



B8



B9



B10



B11



B12



B13



B14



B15



B16



B17



B18



B19



B20



G Series



G1



G2



G3



G4



G5



G6



G7



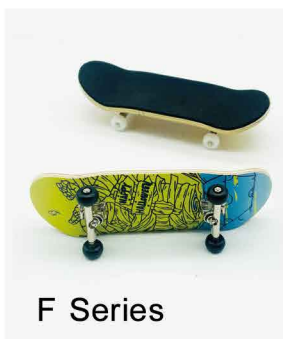
G8



G9



G10



F Series



F1



F2



F3



F4



F5



F6



F7



F8



F9



F10



## M Series



M1



M2



M3



M4



M5



M6



M7



M8



M9



M10



M11



M12



M13



M14



M15



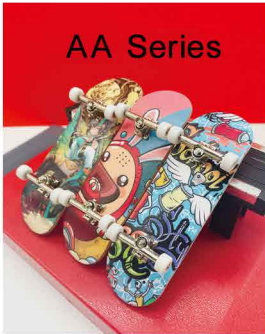
M16



M17



M18



AA1



AA2



AA3



AA4



AA5



AA6



AA7



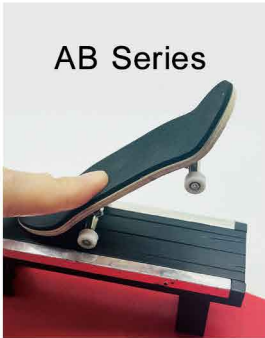
AA8



AA9



AA10



AB1



AB2



AB3



AB4



AB5



AB6



AB7



AB8



AB9



AB10

AC Series



AC1



AC2



AC3



AC4



AC5



AC6



AC7



AC8



AC9



AC10

Chinese Zodiac Series



鼠



牛



虎



兔



龙



蛇



马



羊



猴



鸡



狗



猪

T  
Series



T1



T2



T3



T4



T5



T6



T7



T8



T9



T10



T11



T12



T13



T14



T15



T16



T17



T18



T19



T20



T21



T22



T23



## L Series



L1



L2



L3



L4



L5



L6



L7



L8



L9



L10



L11



L12



L13



L14



L15



L16



L17



L18



L19



L20

## Customization Options



custom graphics



custom packaging



custom decks



custom wheels









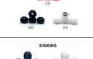












custom trucks

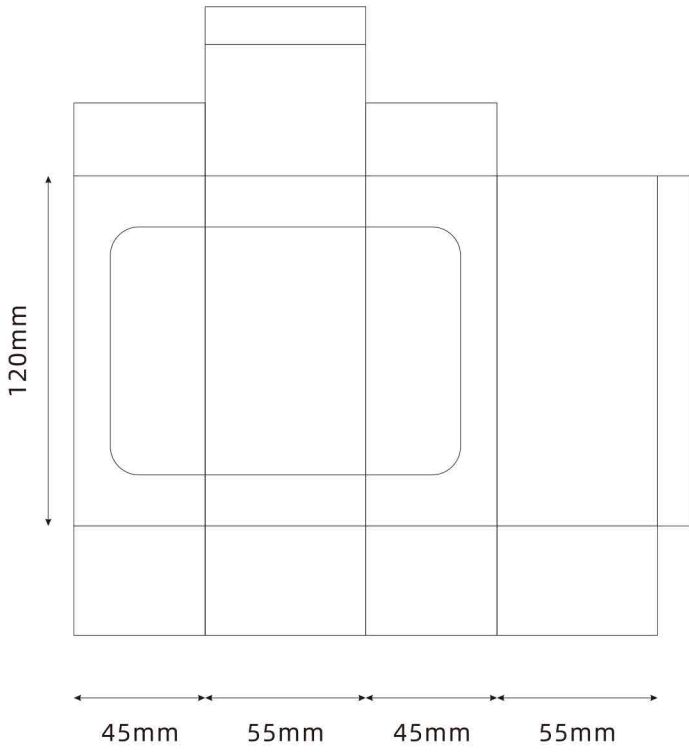


custom grip tape

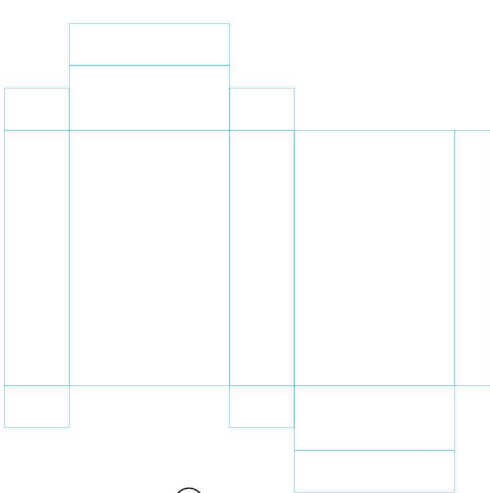
## Accessories of Fingerboard

	Product	Size	Detail	
1		100*30mm	Conventional five-layer maple skateboard	 
		100*32mm		
		100*34mm		
2		100*32mm	Finger skateboard bamboo professional board	
		100*34mm		
3		100*32mm	Professional finger skateboard board advanced carbon fiber fingerboard	
		100*34mm		
4		100*32mm	Professional maple finger skateboard color double-sided.	
		100*34mm		
5		100*32mm	Double-sided dyeing 5-layer northeast maple desktop fingertip skateboard double seesaw	
		100*34mm		
6		0.7cm	High-speed finger skateboard wheel with bearing PP material	
7		8.4*4.8mm	Hand-made tendon wheel--sphericity	
8		8.4*4.8mm	Hand-made tendon wheel--Thread wheel	
9		2.9cm * 2.9cm * 2.9cm	Alloy color wide bracket	
10		All SIZE		
		32mm	Wide bracket 32MM	
		All SIZE	Professional maple finger skateboard silver nickel-plated bridge universal parts	
11		37mm		
12		110*35mm	Polyurethane PU anti-skid pad for finger skateboard	
13		10cm * 2.8cm * 0.2cm	Thickened pu pad 100*30/32/ 34mm	
14		10cm * 2.8cm * 0.2cm	Frosted material	
15		0.01kg	Finger skateboard alloy double-headed tools hand-made mini screwdriver fingertip skateboard universal	
16		PACKAGE	Finger skateboard packaging box	
17			Finger skateboard packaging box	

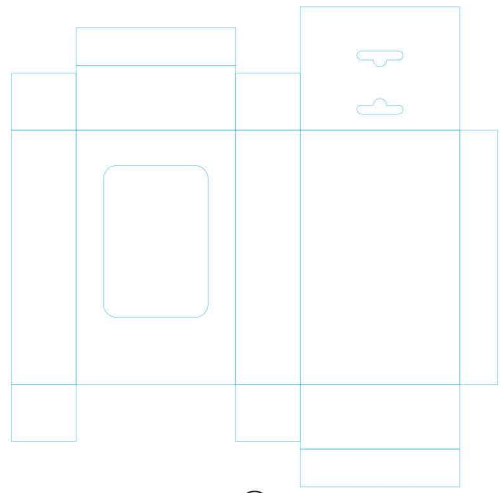
# Packing Box Template



①



②



③

# Packing Boxes



GIFT BOX 1



GIFT BOX 2



PLASTIC BOX 1



PLASTIC BOX 2



BAGGED



64PCS

38\*32\*27CM



16PCS



16PCS



16PCS



16PCS

36\*14\*12CM



100PCS

29\*29\*27CM



**Website:** [boardsfirm.com](http://boardsfirm.com)

**Email:** [info@boardsfirm.com](mailto:info@boardsfirm.com)

**Hours:** Mon-Fri 9:00AM – 6:00PM

**Address:** Room B615-2, No. 31 Xinghu Road, Huli District, Xiamen, China